

1. Objective and Scope

To describe how to correctly install Saferoads Snaploc Guidepost

2. Safety:



Working on or beside a roadway is inherently dangerous.

3. Personal protective equipment (PPE)

The following is mandatory PPE.



Boots



Eye Protection



Ear Protection



Hi Viz



Gloves



Protective Clothing

4. Equipment Required

- a) Portable Jack Hammer; and
- b) Snaploc Installation Tool.

5. Qualifications and Competencies

- a) Safe use of hand tools;
- b) Manual handling; and
- c) Road traffic management.

6. Documentation and Setup

- a) Ensure that the selected installer provides a copy of Public Liability Insurance, WorkCover, SWMS and plant service records. (No documentation - no job);
- b) Contact Dial before you Dig; recommended.



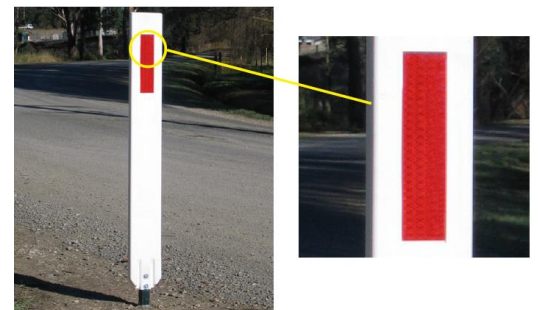
- c) Ensure you are at the correct location and set up traffic control is to Australian Standards, or as advised and required by the client.

7. Installation

- a) Identify Location;
- b) The steel ground socket has a yellow paint mark on one side. Ensure that painted side is placed in the direction of oncoming traffic;
- c) Using the Jackhammer and tool or the Manual driver, drive socket into ground until completely submerged, with top of socket at ground level;



- d) Ensure that you have post delineator facing the correct direction to the oncoming traffic;



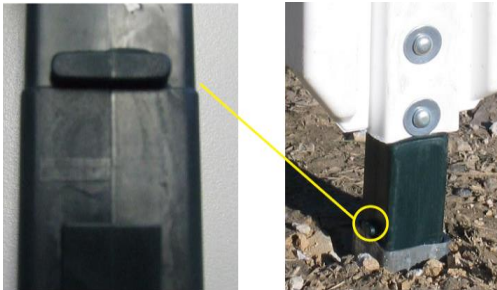
- e) Spray with a little RP7 type lubricant to allow it to easily slip into the ground socket;



- f) Ensure that the post has locking lug facing the edge of the road;



- g) Insert the post and press down till it reaches the level lugs; and



- h) The final step in the installation process is to bend the post both forward and backwards to the ground to pretension the hinge.



- b) Quality Checks

- Workmanship is to specification;
- Materials quality is acceptable;
- Unused materials are removed; and
- Quality checks have been performed.

- c) Environment Checks

- Surrounds are restored to prior condition; and
- No spillages and/or damage to any soil, habitat, atmosphere or drainage.

SOP REVISION UPDATES

Rev 2 dated 27/10/2020

- a) New format

8. Housekeeping and Final Checks

- a) Safety Checks

- Housekeeping practices are adhered to and work site is left clean and safe; and
- Items have been fitted correctly and safely