



SOP – INSSOP022 - Deployment of T-LOK Concrete Barriers

Rev 6 (25/11/2023) – Owner: Chief operating Office



ROAD SAFETY RENTAL

1. Objective and Scope

To describe how to safely deploy and set out of T-LOK Concrete Temporary Barrier System

2. Safety:

Working on or beside a roadway is inherently dangerous.

3. Personal protective equipment (PPE)

The following PPE is mandatory throughout the entire process.



Safety Boots (steel capped) with rubber soles.



Eye and hearing protection is compulsory



Hard hat is compulsory



Hi-Viz must be worn when installing product



Gloves must be worn when installing product



Hi-Viz Protective Clothing is to be worn. Night PPE - Whites

4. Deployment Details

Location: _____

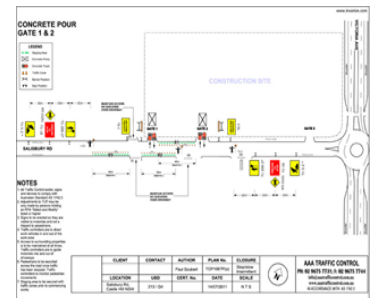
Customer: _____

Date: _____

Team Leader: _____

5. Set Up and Arrival

- Ensure that you are at the correct location / site;
- Meet with appropriate personnel from site (Project Manager, Traffic team);
- Attend any required or designated safety briefing;
- Attend and complete any site specific induction process and sign in; and
- Ensure Traffic Management has been appropriately set up optimizing safety;
- Conduct a site walk through or drive through, observe & document hazards such as culverts, drop offs, overhead power lines, underground services, hydrants, ground or road conditions;
- Calculate and observe that the quantity of barriers & End Treatments are correct and in accordance with the Design Plan and meet with the manufacturer's specification; and
- Prior to the actual commencement of any works, the works supervisor must conduct a site review with a representative (site manager or site OH&S rep.) of the prime contractor no less than 24 hours prior to commencement



6. Plan the deployment

6.1 Considering all site observations, make any appropriate changes or inclusions to ensure safe deployment and placement of barriers, such as:

- a) Increase traffic management or taper;
- b) Ensure a spotter is available (if required), especially if working within 6m of live power lines or within 6m of tram lines;
- c) Make contingencies for unworkable areas and plan ahead;
- d) Mark on road areas to avoid or navigate;
- e) Ensure freight trucks can easily access and exit the site (as you have planned);
- f) Ensure that all personnel are made aware of the LUEZ;
- g) Ensure drivers are inducted;
- h) Liaise with the operator and any other dogman or assistants regarding the plan and discuss any discrepancies (document & detail these); and
- i) Communicate with the Project Manager any important deployment changes or issues and ensure outcomes are communicated with all parties.



7. Safety Briefing

- a) Conduct a safety briefing with all key parties once a plan of action has been agreed to;
- b) Discuss & demonstrate manual handling risks;
- c) Make clear to all parties about the pinch point hazards (hands & feet) and clearly instruct that all hands/feet must be clear when joining barriers; all parties involved in the actual placement of barriers must adhere to this strictly.
- d) Discuss the details of any other hazards and be sure that all parties understand what these are, and what their responsibilities are when you encounter these hazards.



8. Deployment with a Crane (such as a Franna Crane or a Truck Mounted Crane)

- a) Ensure that the plant operator can provide a logbook, their licence and has evidence that their equipment is appropriately maintained and any lifting chains & / or slings are in good condition serviced and tagged accordingly
- b) Ensure the plant has the capacity to lift a T-Lok Barrier (2.6T for the 3.6m unit and 3.9T for the 5.4m unit);
- c) Ensure operator is licensed for the machine and any assessments they have made around lifting & lifting thresholds are adequate;

NO.	TYPE	DATE	TIME	BY	REMARKS	INITIALS
1	FRANNA	25/11/23	08:00	SAFETY	Check all equipment	SAFETY
2	FRANNA	25/11/23	08:15	SAFETY	Check all equipment	SAFETY
3	FRANNA	25/11/23	08:30	SAFETY	Check all equipment	SAFETY
4	FRANNA	25/11/23	08:45	SAFETY	Check all equipment	SAFETY
5	FRANNA	25/11/23	09:00	SAFETY	Check all equipment	SAFETY
6	FRANNA	25/11/23	09:15	SAFETY	Check all equipment	SAFETY
7	FRANNA	25/11/23	09:30	SAFETY	Check all equipment	SAFETY
8	FRANNA	25/11/23	09:45	SAFETY	Check all equipment	SAFETY
9	FRANNA	25/11/23	10:00	SAFETY	Check all equipment	SAFETY
10	FRANNA	25/11/23	10:15	SAFETY	Check all equipment	SAFETY
11	FRANNA	25/11/23	10:30	SAFETY	Check all equipment	SAFETY
12	FRANNA	25/11/23	10:45	SAFETY	Check all equipment	SAFETY
13	FRANNA	25/11/23	11:00	SAFETY	Check all equipment	SAFETY
14	FRANNA	25/11/23	11:15	SAFETY	Check all equipment	SAFETY
15	FRANNA	25/11/23	11:30	SAFETY	Check all equipment	SAFETY
16	FRANNA	25/11/23	11:45	SAFETY	Check all equipment	SAFETY
17	FRANNA	25/11/23	12:00	SAFETY	Check all equipment	SAFETY
18	FRANNA	25/11/23	12:15	SAFETY	Check all equipment	SAFETY
19	FRANNA	25/11/23	12:30	SAFETY	Check all equipment	SAFETY
20	FRANNA	25/11/23	12:45	SAFETY	Check all equipment	SAFETY
21	FRANNA	25/11/23	13:00	SAFETY	Check all equipment	SAFETY
22	FRANNA	25/11/23	13:15	SAFETY	Check all equipment	SAFETY
23	FRANNA	25/11/23	13:30	SAFETY	Check all equipment	SAFETY
24	FRANNA	25/11/23	13:45	SAFETY	Check all equipment	SAFETY
25	FRANNA	25/11/23	14:00	SAFETY	Check all equipment	SAFETY
26	FRANNA	25/11/23	14:15	SAFETY	Check all equipment	SAFETY
27	FRANNA	25/11/23	14:30	SAFETY	Check all equipment	SAFETY
28	FRANNA	25/11/23	14:45	SAFETY	Check all equipment	SAFETY
29	FRANNA	25/11/23	15:00	SAFETY	Check all equipment	SAFETY
30	FRANNA	25/11/23	15:15	SAFETY	Check all equipment	SAFETY
31	FRANNA	25/11/23	15:30	SAFETY	Check all equipment	SAFETY
32	FRANNA	25/11/23	15:45	SAFETY	Check all equipment	SAFETY
33	FRANNA	25/11/23	16:00	SAFETY	Check all equipment	SAFETY
34	FRANNA	25/11/23	16:15	SAFETY	Check all equipment	SAFETY
35	FRANNA	25/11/23	16:30	SAFETY	Check all equipment	SAFETY
36	FRANNA	25/11/23	16:45	SAFETY	Check all equipment	SAFETY
37	FRANNA	25/11/23	17:00	SAFETY	Check all equipment	SAFETY
38	FRANNA	25/11/23	17:15	SAFETY	Check all equipment	SAFETY
39	FRANNA	25/11/23	17:30	SAFETY	Check all equipment	SAFETY
40	FRANNA	25/11/23	17:45	SAFETY	Check all equipment	SAFETY
41	FRANNA	25/11/23	18:00	SAFETY	Check all equipment	SAFETY
42	FRANNA	25/11/23	18:15	SAFETY	Check all equipment	SAFETY
43	FRANNA	25/11/23	18:30	SAFETY	Check all equipment	SAFETY
44	FRANNA	25/11/23	18:45	SAFETY	Check all equipment	SAFETY
45	FRANNA	25/11/23	19:00	SAFETY	Check all equipment	SAFETY
46	FRANNA	25/11/23	19:15	SAFETY	Check all equipment	SAFETY
47	FRANNA	25/11/23	19:30	SAFETY	Check all equipment	SAFETY
48	FRANNA	25/11/23	19:45	SAFETY	Check all equipment	SAFETY
49	FRANNA	25/11/23	20:00	SAFETY	Check all equipment	SAFETY
50	FRANNA	25/11/23	20:15	SAFETY	Check all equipment	SAFETY
51	FRANNA	25/11/23	20:30	SAFETY	Check all equipment	SAFETY
52	FRANNA	25/11/23	20:45	SAFETY	Check all equipment	SAFETY
53	FRANNA	25/11/23	21:00	SAFETY	Check all equipment	SAFETY
54	FRANNA	25/11/23	21:15	SAFETY	Check all equipment	SAFETY
55	FRANNA	25/11/23	21:30	SAFETY	Check all equipment	SAFETY
56	FRANNA	25/11/23	21:45	SAFETY	Check all equipment	SAFETY
57	FRANNA	25/11/23	22:00	SAFETY	Check all equipment	SAFETY
58	FRANNA	25/11/23	22:15	SAFETY	Check all equipment	SAFETY
59	FRANNA	25/11/23	22:30	SAFETY	Check all equipment	SAFETY
60	FRANNA	25/11/23	22:45	SAFETY	Check all equipment	SAFETY
61	FRANNA	25/11/23	23:00	SAFETY	Check all equipment	SAFETY
62	FRANNA	25/11/23	23:15	SAFETY	Check all equipment	SAFETY
63	FRANNA	25/11/23	23:30	SAFETY	Check all equipment	SAFETY
64	FRANNA	25/11/23	23:45	SAFETY	Check all equipment	SAFETY
65	FRANNA	25/11/23	00:00	SAFETY	Check all equipment	SAFETY

- d) Commence the lifting of barriers off the truck, ensuring that all assistants are well clear of the equipment and barrier in case of a fall;
- e) “Well clear” means that if the unloading equipment were to lose control of the barrier and the barrier fell, the falling/tumbling barrier could not reach/strike the assistant.
- f) Ensure operator lowers the barrier(s) before traversing to increase load stability when getting in to position;
- g) Barrier Team Leader to provide all directional information and instructions to the operator so there is only 1 person communicating (Team Leader will need to remain aware of surroundings and where other people are while instructing).



Motion	Hand Signal	Whistle, Bell or Buzzer signal	Motion	Hand Signal	Whistle, Bell or Buzzer signal	Motion	Hand Signal	Whistle, Bell or Buzzer signal
Hoisting raise		2 short ●●	Luffing boom up		3 short ●●●	Slewing left		1 Long 1 Short —●
Telescoping boom extend. Jib-trolley out.		1 Long 3 Short —●●●	Travel and Traverse (Indicate the direction you want the crane to go)		Not Applicable	Hoisting down		1 long —
Luffing boom down		4 short ●●●●	Slewing right		1 Long 2 Short —●●	Telescoping boom retract. Jib-trolley in.		1 Long 4 Short —●●●●
Stop		1 short ●						

- h) Deployment team must not get in between the joining barriers to avoid any crush incident;
- i) When connecting two barriers, lower the one on the Crane in such a way that the “C” section enters smoothly around the “T” section without jamming;
- j) When barriers are being joined, the Pinch Point hazard needs to be highlighted, and avoided at all times. At this time, all parties need to note the drop/exclusion zones, and be cautious of crush points and pinch points; and
- k) All hands are to be free from barriers upon joining and away from the crush / impact area.





SOP – INSSOP022 - Deployment of T-LOK Concrete Barriers

Rev 6 (25/11/2023) – Owner: Chief operating Office



ROAD SAFETY RENTAL

9. Housekeeping and Final Checks

a) Safety Checks

- Housekeeping practices are adhered to and work site is left clean and safe; and
- Items have been fitted correctly and safely

b) Quality Checks

- Workmanship is to specification;
- Materials quality is acceptable;
- Unused materials are removed; and
- Quality checks have been performed.

c) Environmental Checks

- Surrounds are restored to prior conditions; and
- No spillages and / or damage to any soil, habitat, atmosphere or drainage.

SOP REVISION UPDATES

SOP Amendment Level

Rev #	Date	Comment
6	22/11/2023	a. PPE Icons updated – No Revision change
6	25/03/2022	a. Inclusion of whites and hard hat in PPE section b. New format