

1. Objective and Scope

To describe how to safely deploy and set out of T-LOK Concrete Temporary Barrier System

2. Safety:

Working on or beside a roadway is inherently dangerous.

3. Personal protective equipment (PPE)

The following PPE is mandatory throughout the entire process.



Boots



Eye Protection



Ear Protection



Hi Viz



Gloves



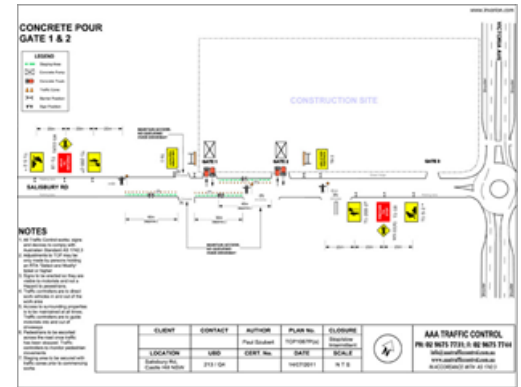
Protective Clothing

4. Deployment Details

Location: _____
 Customer: _____
 Date: _____
 Team Leader: _____

5. Set Up and Arrival

- a) Ensure that you are at the correct location / site;
- b) Meet with appropriate personnel from site (Project Manager, Traffic team);
- c) Attend any required or designated safety briefing;
- d) Commence site specific induction process and sign in; and
- e) Ensure Traffic Management has been appropriately set up optimizing safety;



- f) Conduct a site walk through or drive through, observe & document hazards such as culverts, drop offs, overhead power lines, underground services, hydrants, ground or road conditions;



- g) Calculate and observe that the quantity of barriers & End Treatments are correct and in accordance with the Design Plan and meet with the manufacturer’s specification; and
- h) Prior to the actual commencement of any works, the works supervisor must conduct a site review with a representative (site manager or site OH&S rep.) of the prime contractor no less than 24 hours prior to commencement

6. Plan the deployment

- 6.1 Considering all site observations, make any appropriate changes or inclusions to ensure safe deployment and placement of barriers, such as:
 - a) Increase traffic management or taper;
 - b) Ensure a spotter is available (if required), especially if working within 6m of live power lines or within 6m of tram lines;

- c) Make contingencies for unworkable areas and plan ahead;
- d) Mark on road areas to avoid or navigate;
- e) Ensure freight trucks can easily access and exit the site (as you have planned);
- f) Liaise with the operator and any other dogman or assistants regarding the plan and discuss any discrepancies (document & detail these); and
- g) Communicate with the Project Manager any important deployment changes or issues and ensure outcomes are communicated with all parties.



7. Safety Briefing

- a) Conduct a safety briefing with all key parties once a plan of action has been agreed to;
- b) Discuss & demonstrate manual handling risks;
- c) Make clear to all parties about the pinch point hazards (hands & feet) and clearly instruct that all hands/feet must be clear when joining barriers; all parties involved in the actual placement of barriers must adhere to this strictly.



- d) Discuss the details of any other hazards and be sure that all parties understand what these are, and what their responsibilities are when you encounter these hazards.

8. Deployment with a Crane (such as a Franna Crane or a Truck Mounted Crane)

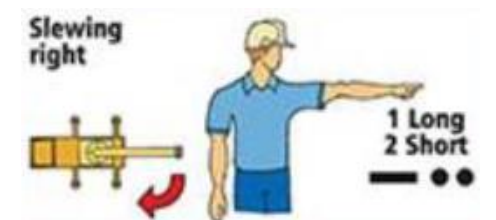
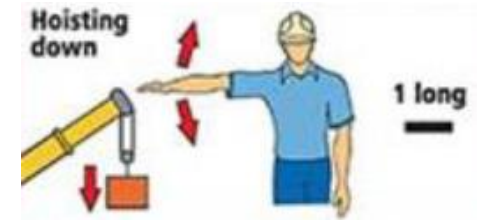
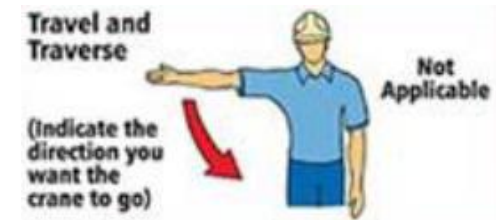
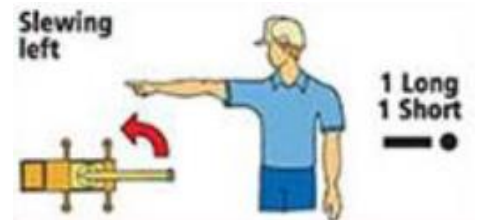
- a) Ensure that the plant operator can provide a log book and has evidence that their equipment is appropriately maintained and any lifting chains & / or slings are in good condition serviced and tagged accordingly

- b) Ensure the plant has the capacity to lift a T-Lok Barrier (2.6T for the 3.6m unit and 3.9T for the 5.4m unit);
- c) Ensure operator is licensed for the machine and any assessments they have made around lifting & lifting thresholds are adequate;

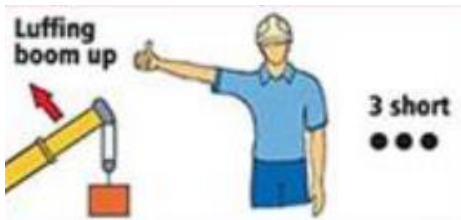


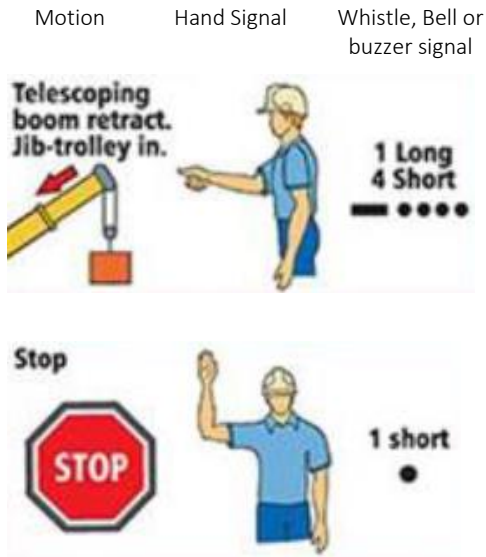
- d) Commence the lifting of barriers off the truck, ensuring that all assistants are well clear of the equipment and barrier in case of a fall;
- e) “Well clear” means that if the unloading equipment were to lose control of the barrier and the barrier fell, the falling/tumbling barrier could not reach/strike the assistant.
- f) Ensure operator lowers the barrier(s) before traversing to increase load stability when getting in to position;
- g) Barrier Team Leader to provide all directional information and instructions to the operator so there is only 1 person communicating (Team Leader will need to remain aware of surroundings and where other people are while instructing).

Motion Hand Signal Whistle, Bell or buzzer signal



Motion Hand Signal Whistle, Bell or buzzer signal





- Items have been fitted correctly and safely
- b) Quality Checks
- Workmanship is to specification;
 - Materials quality is acceptable;
 - Unused materials are removed; and
 - Quality checks have been performed.
- c) Environmental Checks
- Surrounds are restored to prior conditions; and
 - No spillages and / or damage to any soil, habitat, atmosphere or drainage.

- m) Deployment team must not get in between the joining barriers to avoid any crush incident;
- n) When connecting two barriers, lower the one on the Crane in such a way that the “C” section enters smoothly around the “T” section without jamming;
- o) When barriers are being joined, the Pinch Point hazard needs to be highlighted, and avoided at all times. At this time, all parties need to note the drop/exclusion zones, and be cautious of crush points and pinch points; and
- p) All hands are to be free from barriers upon joining and away from the crush / impact area.

SOP REVISION UPDATES

Rev 4 dated 24/10/2020

- a) New format



9. Housekeeping and Final Checks

- a) Safety Checks
 - Housekeeping practices are adhered to and work site is left clean and safe; and